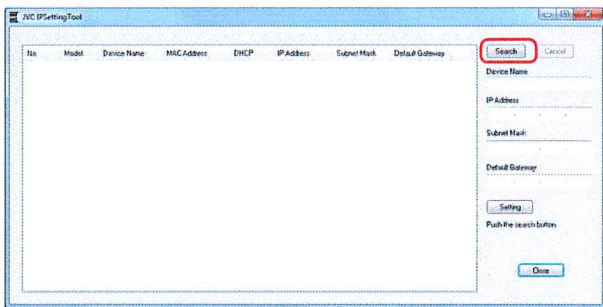


# IP Address Settings

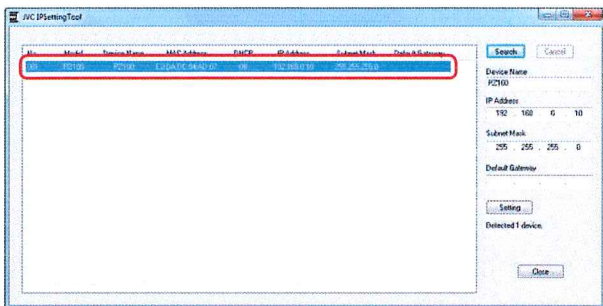
## Using the IP Setting Tool

- Connect the camera to be configured to the network via the LAN terminal.
- Download the "IPSettingTool" from the URL stated on the cover page.
- Connect the computer for executing the "IPSettingTool" to the network to establish communication with the camera to be configured.

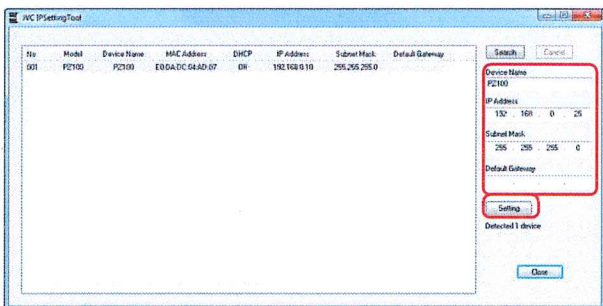
- 1 Start up "IPSettingTool".
- 2 Click the [Search] button.



- 3 Select from the list the camera to be configured.



- 4 Enter the respective network setting items and click the [Setting] button. After a confirmation screen appears, click [OK].
  - "Default Gateway" can be omitted.

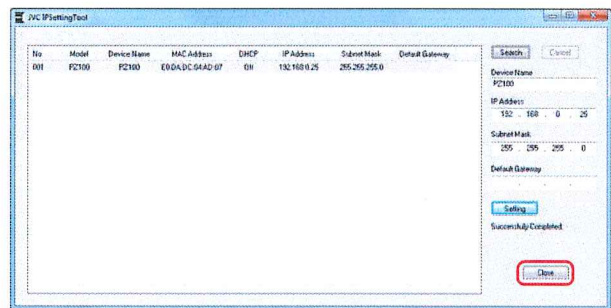


- If setting is successful, the search list display will be updated.
- If there are multiple cameras to be configured, repeat steps 3 to 4 for each camera.

Memo : \_\_\_\_\_

- When the "Failed in the Setting." message is displayed, check the setting details and review the connecting device then try again.

- 5 Click the [Close] button to exit.



Memo : \_\_\_\_\_

- Cameras with the same IP address as the computer for configuring the IP address cannot be detected.
- Make sure that there is no duplication in the IP address configured for each camera.
- When a firewall has been installed, change the setting to allow communication access by the "IPSettingTool".
- The "IPSettingTool" runs on Windows. For more information on setting the IP address in an environment other than Windows, please refer to the [Configuring IP Address Manually] (P 35).